

## Private Equity Deals – H1 2021

---



### Elysian Capital

Advised Elysian Capital on its acquisition and investment, in conjunction with management, in Eton Bridge Partners Ltd.



### BGF

Advised UK investor BGF on its US\$11 million investment in Genflow, a London and Los Angeles-based brand-building agency.



### Bowmark Capital

Advised Bowmark Capital, the mid-market private equity firm, on its backing of the buy-out of IWSR, a research platform for the US\$1.5 trillion global alcoholic beverage market.



### FPE Capital

Advised FPE Capital, a software and services focused lower mid-market growth investor, on its investment in Codestone, a business applications and cloud services platform.



### FPE Capital

Advised FPE Capital and management on the sale of Masstech to Telestream. FPE and the management team have sold their stake to Telestream, which is backed by Genstar Capital.



### BGF

Advised UK investor BGF on its investment in Source BMX, an omni-channel BMX retailer.



### Akerbla

Advised Akerbla Group on its acquisition of a majority stake in Ocean Ecology, the UK marine and environmental survey specialist.



### STAR Capital Partnership LLP

Advised on the acquisition of a majority interest by STAR in Rail Operations (UK) Limited, a leading provider of rolling stock movement and storage services to the UK rail industry.



### Bestport Private Equity

Advised Bestport Private Equity on its investment in Playful Promises, the London-based lingerie and swimwear business.



### Apposite Capital

Advised healthcare investor Apposite Capital on its investment in medical device company, Emblation.

## CORSEARCH®

### Corsearch

Advised the management team of a provider of innovative brand risk and performance solutions, on their rollover and incentive equity arrangements following its sale to Astorg.



### Questionmark

Advised the management team on the sale of leading SaaS testing and assessment platform Questionmark to Battery Ventures backed Learnosity and on their rollover equity arrangements with Learnosity.

---

## ROCKPOOL..

### Rockpool Investments

Advised Rockpool Investments on the sale of its interests in the Airedale Catering Equipment Group to Rubicon Partners.



### Lawyers on Demand

Advised Bowmark portfolio company Lawyers on Demand on its investment in Syke, one of the world's fastest growing independent legal tech firms.



### Churches Fire & Security

Advised Churches Fire & Security, a portfolio company of Horizon Capital, on its acquisition of Dragon Fire & Security Systems.



### Optimicity

Advised Optimicity, a portfolio company of FPE Capital, on its acquisition of Avagio, a managed IT services provider.

---

## CIVICA

### Civica UK Limited

Advised Civica, which is backed by private equity fund, Partners Group, on its acquisitions of ICS Global Ltd, ntropy data, Inc and Calibrand Ltd.



### Urban Jungle

Advised disruptive insurtech provider Urban Jungle on its £8 million investment round.

---

## Our dedicated private equity team



**Gabriel Boghossian**

Partner, London

T: +44 20 7809 2762

E: gabriel.boghossian@shlegal.com



**Richard Coleman**

Partner, London

T: +44 20 7809 2605

E: richard.coleman@shlegal.com



**Adam Crossley**

Partner, London

T: +44 20 7809 2603

E: adam.crossley@shlegal.com



**Malcolm MacDougall**

Partner, London

T: +44 20 7809 2625

E: malcolm.macdougall@shlegal.com



**Jonathan Pittal**

Partner, London

T: +44 20 7809 2768

E: jonathan.pittal@shlegal.com

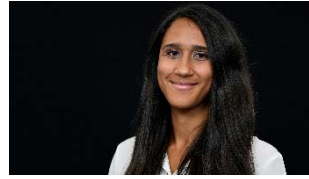


**Sarah de Ste Croix**

Partner, London

T: +44 20 7809 2561

E: sarah.destecroix@shlegal.com



**Nicola Baird**

Senior associate, London

T: +44 20 7809 2835

E: nicola.baird@shlegal.com



**Emily Davies**

Senior associate, London

T: +44 20 7809 2848

E: emily.davies@shlegal.com



**Chris Manning**

Senior associate, London

T: +44 20 7809 2403

E: chris.manning@shlegal.com



**Lucy Thorpe**

Senior associate, London

T: +44 20 7809 2299

E: lucy.thorpe@shlegal.com



**Matthew Gallagher**

Associate, London

T: +44 20 7809 2693

E: matthew.gallagher@shlegal.com



**Rajiv Kakkad**

Associate, London

T: +44 20 7809 2814

E: rajiv.kakkad@shlegal.com



**Dafni Loizou**

Associate, London

T: +44 20 7809 2834

E: dafni.loizou@shlegal.com



**Harry Wakefield**

Associate, London

T: +44 20 7809 2551

E: harry.wakefield@shlegal.com



**Lydia Zakrzewski**

Associate, London

T: +44 20 7809 2991

E: lydia.zakrzewski@shlegal.com



**Arooj Khan**

Associate, London

T: +44 20 7809 2208

E: arooj.khan@shlegal.com